



DAWN SANDOVAL

Residential

2 Bedrooms

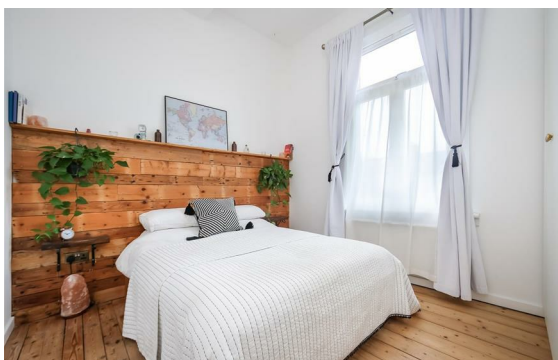
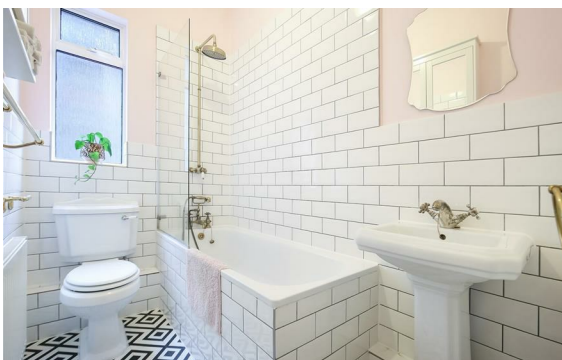
Apartment

Located
in Woodford Green
£2,050 Per Month



info@dawnsandovalresidential.cc www.dawnsandovalresidential.co.uk

0207 093 1702



**DAWN
SANDOVAL**
Residential

5 Indecon Square
Lightermans Road
London
E14 9DQ

0207 093 1702

[info@dawnsandovalresidential.](mailto:info@dawnsandovalresidential.com)

www.dawnsandovalresidential.co.uk

Presenting this stunning UNFURNISHED two bedroom property available to rent by 16 September (potentially earlier).

Energy Efficiency Rating: D

Agents Note: Whilst every care has been taken to prepare these particulars, they are for guidance purposes only. All measurements are approximate and are for general guidance purposes only and whilst every care has been taken to ensure their accuracy, they should not be relied upon and potential buyers/tenants are advised to recheck the measurements.